

Oldee Cam TS300 Software Quick Configuration Guide

The Oldee Cam TS300 software is for the dealer to initialize SD Media Cards for use with the TS300 In-Vehicle Camera System only. An SD Media Card reader is included with the software. The software also generates installation reports which includes vehicle information, the installer name and dealer code, the event date and time.

System Requirements

To use the software, you'll need a computer with the following minimum system requirements:

Operating Systems	Windows® 2000 or Windows XP
CPU	Pentium 4 2.6 GHz or higher speed processor
RAM	512MB or higher
Interface	SD Memory Card Reader
HDD Free space	Install 20MB or higher Backup 2GB or higher
Display	1024 × 768 pixel/High Color (16 bit) or higher

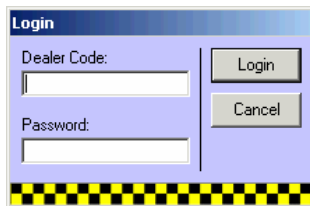
Installing the Oldee Cam TS300 Software

- 1 Run the software application.

Important: Log in as a user with full rights.

Initializing the SD Media Card

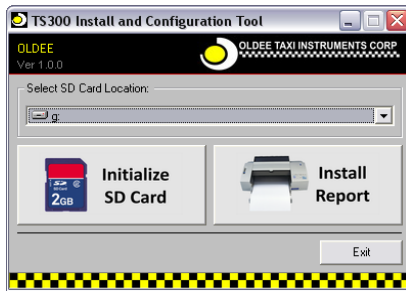
- 1 Insert the SD Media Card into the SD Media Card Reader, and insert into a USB port on your computer.
- 2 Double click the TS300 Config icon on your computer's desktop. The Login window appears.



- 3 Log in using the following Dealer Code and Password (not case sensitive) or the dealer credentials provided by Oldee Taxi.
Dealer Code: XXXXX
Password: XXXXX
- 4 Click **Login**.

Oldee Cam TS300 Software Quick Configuration Guide

The TS300 Install and Configuration Tool window appears.



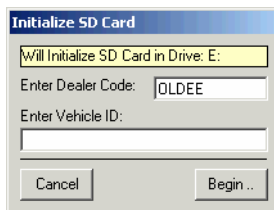
- 5 Select the drive containing the SD Media Card.

The Initialize SD Card dialog box appears.



CAUTION: Potential Data Loss

Select the correct drive. The initialization process will format the selected disk and erase all data. Make sure you have not selected your hard disk or another drive containing information you wish to keep.



- 6 If logged in as OLDEE, enter the dealer code.
- 7 Enter the Vehicle ID. This can be the VIN or Medallion number of the cab.
- 8 Click **Begin** to format the SD Media Card and initialize it with the mandated NY TLC Configuration. The Formatting dialog box appears.



Once initialization of the SD Media Card is complete, a dialog box appears.



9 Click **OK**.



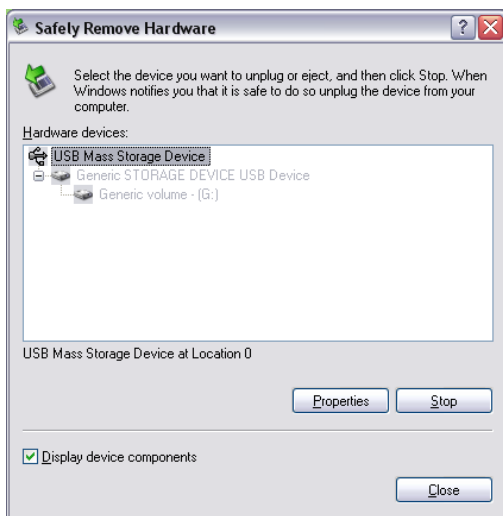
CAUTION

Do not remove the SD Media Card without safely ejecting from your computer.

10 Click on the Safely Remove Hardware icon in the task bar notification area.



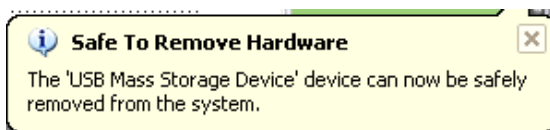
The Safely Remove Hardware dialog box appears.



11 Select the device you want to eject, and then click **Stop**.

12 Confirm the device to be stopped. Click **OK** to continue.

The Safe to Remove Hardware message appears.



13 Safely remove the SD Media Card from the SD Media Card Reader.

14 Close the Safely Remove Hardware dialog box.

Installing the SD Media Card in the TS300 Recorder

Before installing the SD Media Card in the TS300 recorder, make sure the recorder is installed in the vehicle and the ignition is OFF. Make sure the remote control lights are off before installing the SD Media Card into the recorder.

Important: The recorder supports a Power-Off Delay ranging from 0 to 90 minutes. Depending on the setting of this delay (controlled by the rotary switch inside the recorder), you may need to wait after turning ignition OFF before the lights on the remote control go out. If you do not want to wait this period of time, you will need to disconnect the power.

Even if the ignition is turned off, the recorder will remain powered on as long as the front dome light is illuminated. The dome light must be switched off to initiate the power delay-off.

- 1 Insert the SD Media Card.
- 2 Turn on the vehicle power (reconnect the power to the TS300 recorder and turn on ignition).
 - During normal power up, the red and blue remote panel lights are briefly On, flashing, On, then only the blue light is flashing or On.
 - During power up with a firmware upgrade, the red and blue remote panel lights are On, flashing, Off with 4 slow beeps, On, flashing, On, then only the blue light is flashing or On.



CAUTION: Equipment damage

Do not turn off or disconnect power during a firmware upgrade as power loss may render the TS300 inoperative. If the firmware upgrade fails, return the TS300 recorder to the product dealer for service.

- 3 Press the snapshot button to capture an image of the camera view for the TLC installation report.



- 4 Turn off the vehicle and wait for the power to the TS300 recorder to turn off.
The remote control lights turn off.

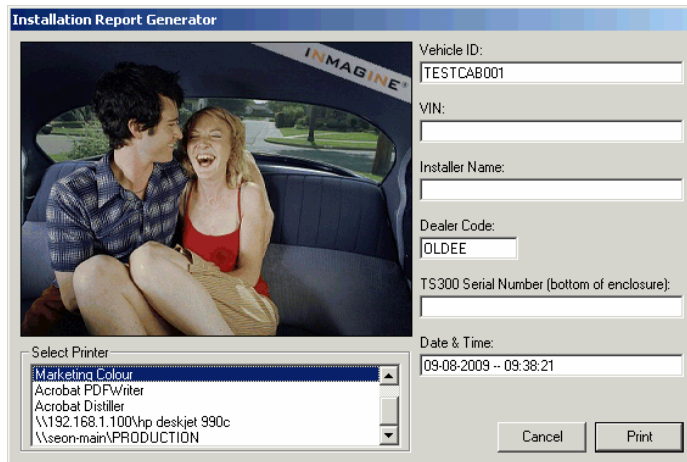
Important: The recorder supports a Power-Off Delay ranging from 0 to 90 minutes. Depending on the setting of this delay (controlled by the rotary switch inside the recorder), you may need to wait after turning off ignition before the lights on the remote control go out. If you do not want to wait this period of time, you will need to disconnect the power.

Even if the ignition is turned off, the recorder will remain powered on as long as the front dome light is illuminated. The dome light must be switched off to initiate the power delay-off.

- 5 Once power is off, remove the SD Media Card and insert into the SD Media Card Reader. Insert the SD Media Card Reader into a USB port on your computer.

Generating an Installation Report

- 1 Start the Oldee Cam TS300 software (if necessary) and log in again.
- 2 Click **Install Report** to generate the mandated TLC installation report. The Installation Report Generator dialog box appears.
- 3 Fill in all the fields in the Installation Report Generator dialog box.



- 4 Select the appropriate printer. Click the **Print** button to generate the report. A sample report is shown.



This completes the process.

Related Documents

- *TS300 In-Vehicle Camera System Quick Hardware Installation Guide* 700-0098 R001
- *PC Viewer TS300 Player Software Quick Start Guide* 700-0090 R001

Customer Service Contact Information

For Customer Service, contact Oldee Taxi Instruments Monday to Friday 8 AM to 6 PM and Saturday 9 AM to 3 PM.

Telephone	718-482-6533
Fax	718-482-7144
Email	info@oldeetaxiinstruments.com

©December 2009. Seon Design Inc. All rights reserved. www.seon.com